

Mary Worthing

Reproduced by permission of the author.

1103 Art in Life

June 27, 2013

Stylish Rain

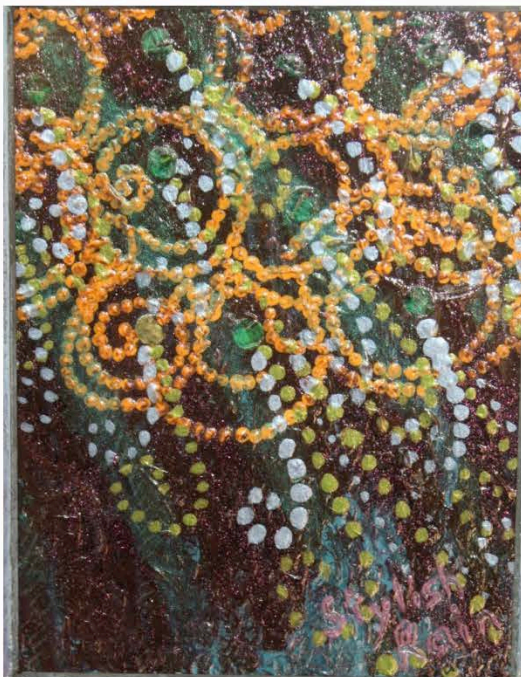
Artist: Sharon Burchett, Norman, Oklahoma

When I first viewed this abstract piece representing the natural world, *Stylish Rain* on Sharon's website, www.sharonburchett.com, I was immediately drawn to the energetic bursts of orange dots swirling around the top from edge to edge while cascading down into dots of green and blue hues on a background of intense iridescent purple. I was eager to see the actual artwork and was pleasantly surprised at all the elements of color, value and texture packed into a 4.2" x 5.4" size. The painting *Stylish Rain*, created in 2010, uses a mixed media of enamel, acrylic, chalk and pencil on fiberboard to create the multi-dimensional effect of the finished piece. Sharon completes her work with a mat and frame, which she does herself, and inscribes in calligraphy on the back of each piece the details of her creation.

During the process of paint meets fiberboard, Sharon creates many projects at the same time. Using a layering technique, the pieces require long drying times in between coats of paint. Her artwork begins as a concept of an inspiration with an end result in mind, all while allowing the creation to develop over time. The inspiration of *Stylish Rain* is a comparison of Oklahoma rain and the beauty of nature created by it. She paints for the pure aesthetic enjoyment each piece has to offer the beholder and encourages the viewer to take time to ponder the artwork and think about how nature and beauty co-exist.

Entirely textured throughout, *Stylish Rain* appears almost Braille-like as the dots connect to one another. Viewed in natural light, the colors burst forth from the iridescent deep purple background in layers of orange, green, teal, blue, yellow and light blue. Holding the piece at different angles gives way to the depth of textures and reveals the outline of circles layered within the paint reminiscent of paper dots from a paper hole punch. The balance of deep purple and variety of brightly colored hues adds the value of dark versus light colors. Sensing a possible storm in the distance moving away as the bright colors leap forward leading the eyes to follow the colorful dots swirling downward toward the bottom of the piece.

After visiting with Sharon and viewing the artwork in the library at the Charles M. Russell Center, where Sharon works, I was able to take time to appreciate the formal elements and design details of *Stylish Rain*. With a dark and stormy background, the painting encouraged me to imagine the sun shining through the rain creating a palette of colored raindrops reminding one to dance in the rain for the storm will bring about a renewed freshness to our souls and nature alike.



Works Cited

Burchett, Sharon. *Stylish Rain*. 2010. Mixed media on fiberboard. Norman, OK.